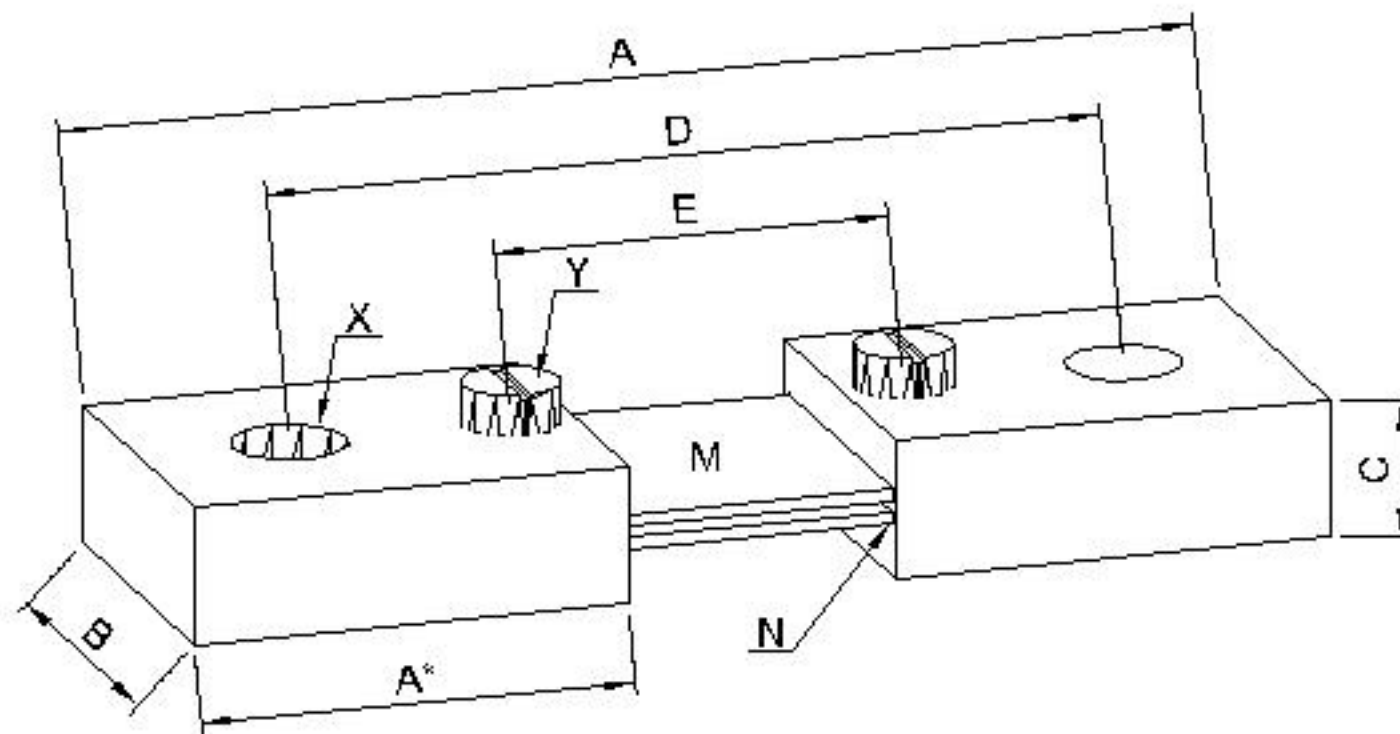


SUMO 75mV SHUNTS



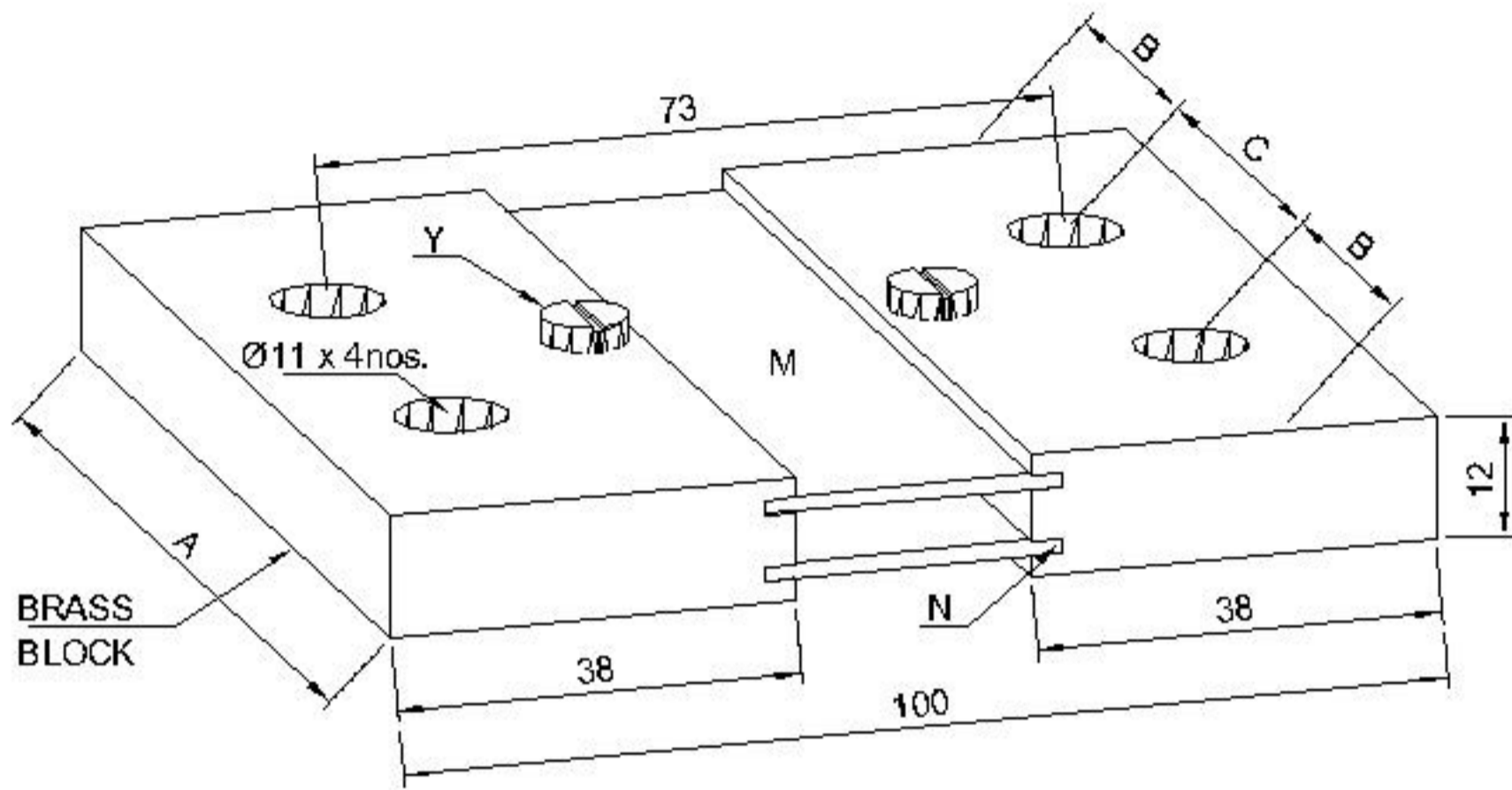
- A — OVER ALL LENGTH (BRASS)
- A* — LENGTH OF BRASS PIECE
- B — WIDTH OF BRASS PIECE
- C — THICKNESS OF BRASS PICECE
- D — DISTANCE APART — CURRENT & MOUNTING BOLTS
- E — DISTANCE APART — POTENTIAL CONNECTION
- M — MANGANIN RIBBON
- M* — NUMBER OF MANGANIN RIBBON BLADES
- N — SILVER SOLDERED JOINT
- X — SIZE — CURRENT & MOUNTING BOLT HOLES
- Y — POTENTIAL CONNECTION — M4 CH. HD. BRASS SCREW w/WASHER

AMP	A	A*	B	C	D	E	M*	X	MILLI-OHM
5	80	28	12.7	6.35	63.5	33	wire	6.7	15.0000
10	80	31	12.7	6.35	63.5	33	wire	6.7	7.5000
15	80	28	12.7	6.35	63.5	33	1	6.7	5.0000
20	80	28	12.7	6.35	63.5	33	1	6.7	3.7500
25	80	28	12.7	6.35	63.5	33	1	6.7	3.0000
30	80	28	12.7	6.35	63.5	33	1	6.7	2.5000
40	80	28	12.7	6.35	63.5	33	1	6.7	1.8750
50	80	28	12.7	6.35	63.5	33	1	6.7	1.5000
60	80	28	16	6	63.5	33	1	8.5	1.2500
75	80	28	16	6	63.5	33	1	8.5	1.0000
100	84	30	20	8	63.5	33	1	8.5	0.7500
150	84	30	20	8	63.5	33	2	8.5	0.5000
200	100	38	20	8	73	33	2	11	0.3750
250	100	38	20	8	73	33	2	11	0.3000
300	100	38	20	12	73	33	2	11	0.2500
400	100	38	20	12	73	33	2	11	0.1875
500	100	38	25	12	73	33	2	11	0.1500
600	100	38	30	12	73	33	2	11	0.1250
750	100	38	40	12	73	33	2	11	0.10000
1000	100	38	50	12	73	33	2	11	0.07500

NOTE : ALL DIMENSION ARE IN MM.

DIMENSIONS: SUBJECT TO CHANGE WITHOUT NOTICE

SUMO 75mV SHUNTS



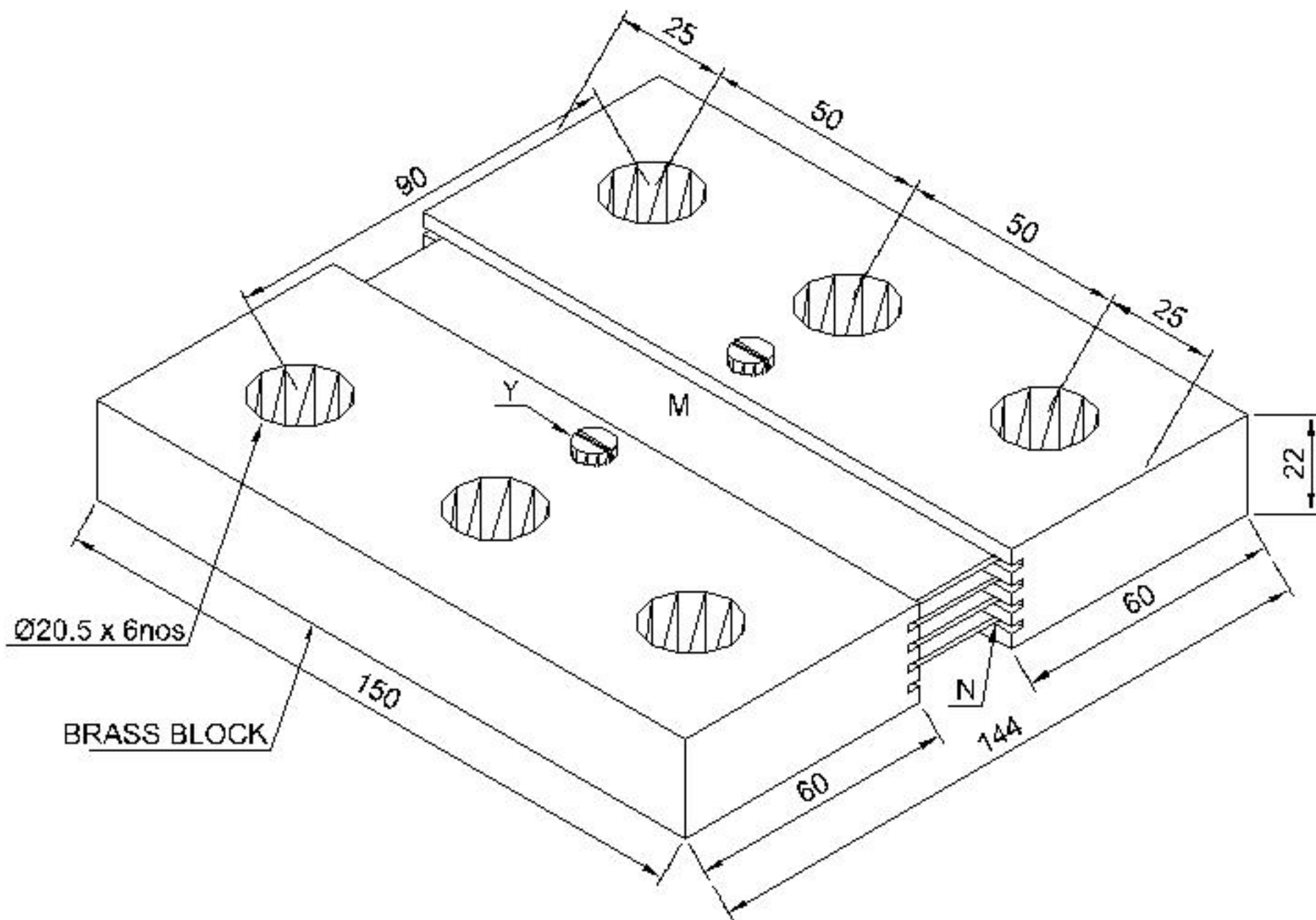
- M - MANGANIN RIBBON
- N - SILVER SOLDERED JOINT
- Y - POTENTIAL CONNECTION - M4 CH. HD. BRASS SCREW w/WASHER

AMP	A	B	C	MILLI-OHM
1200	60	11	38	0.06250
1250	60	11	38	0.06000
1500	75	18.5	38	0.05000
1750	85	23.5	38	0.04286
2000	95	22.5	50	0.03750
2500	100	25	50	0.03000
3000	120	30	60	0.02500
3500	120	30	60	0.02143

NOTE : ALL DIMENSION ARE IN MM.

DIMENSIONS: SUBJECT TO CHANGE WITHOUT NOTICE

SUMO 75mV SHUNTS



- M - MANGANIN RIBBON
- N - SILVER SOLDERED JOINT
- Y - POTENTIAL CONNECTION - M4 CH. HD. BRASS SCREW w/WASHER

AMP	MILLI-OHM
5000	0.01500
6000	0.01250
7500	0.01000

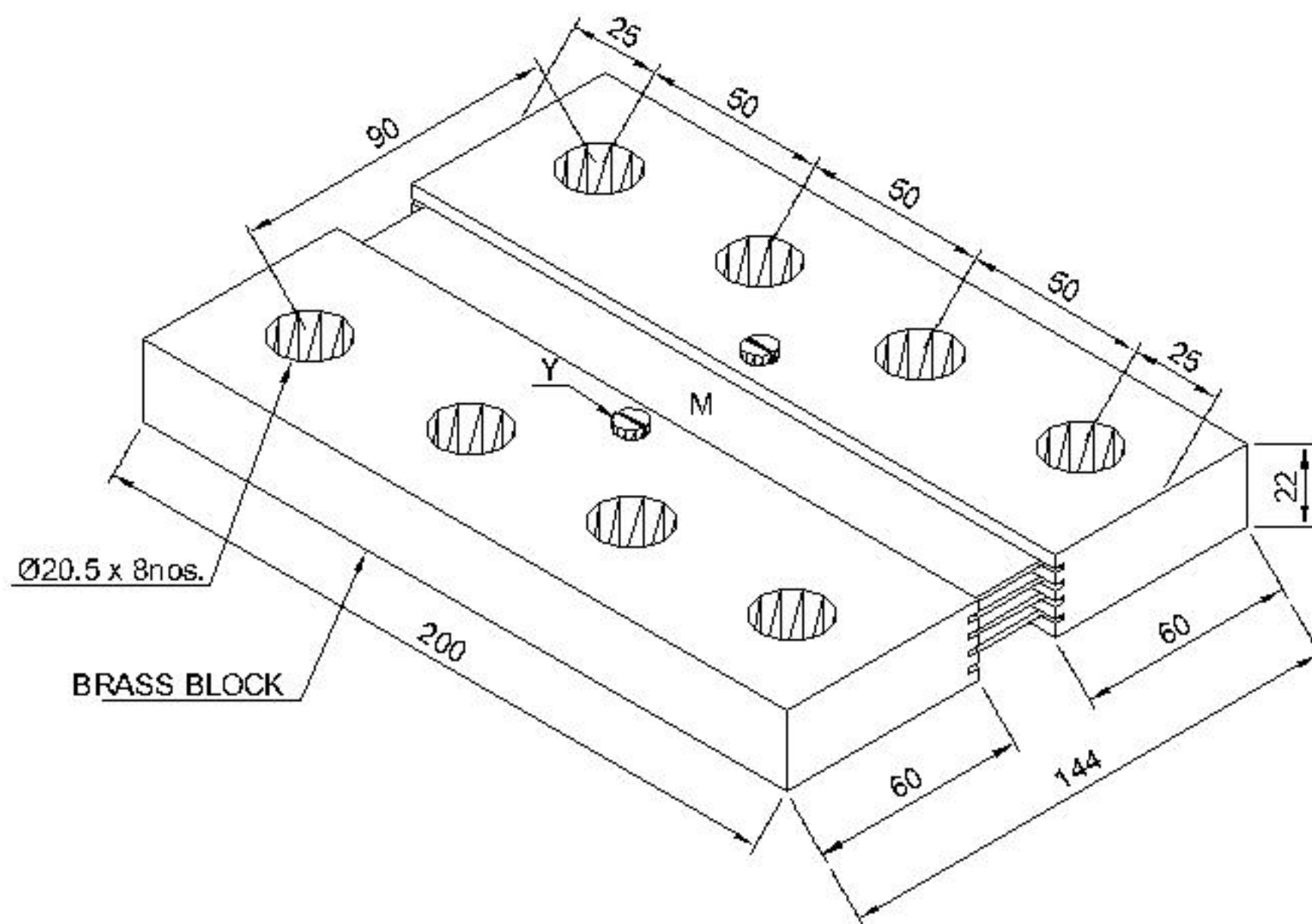
NOTE : ALL DIMENSION ARE IN MM.

DIMENSIONS: SUBJECT TO CHANGE WITHOUT NOTICE

SUMO 75mV SHUNTS

10KAmp

7.50 micro-ohm



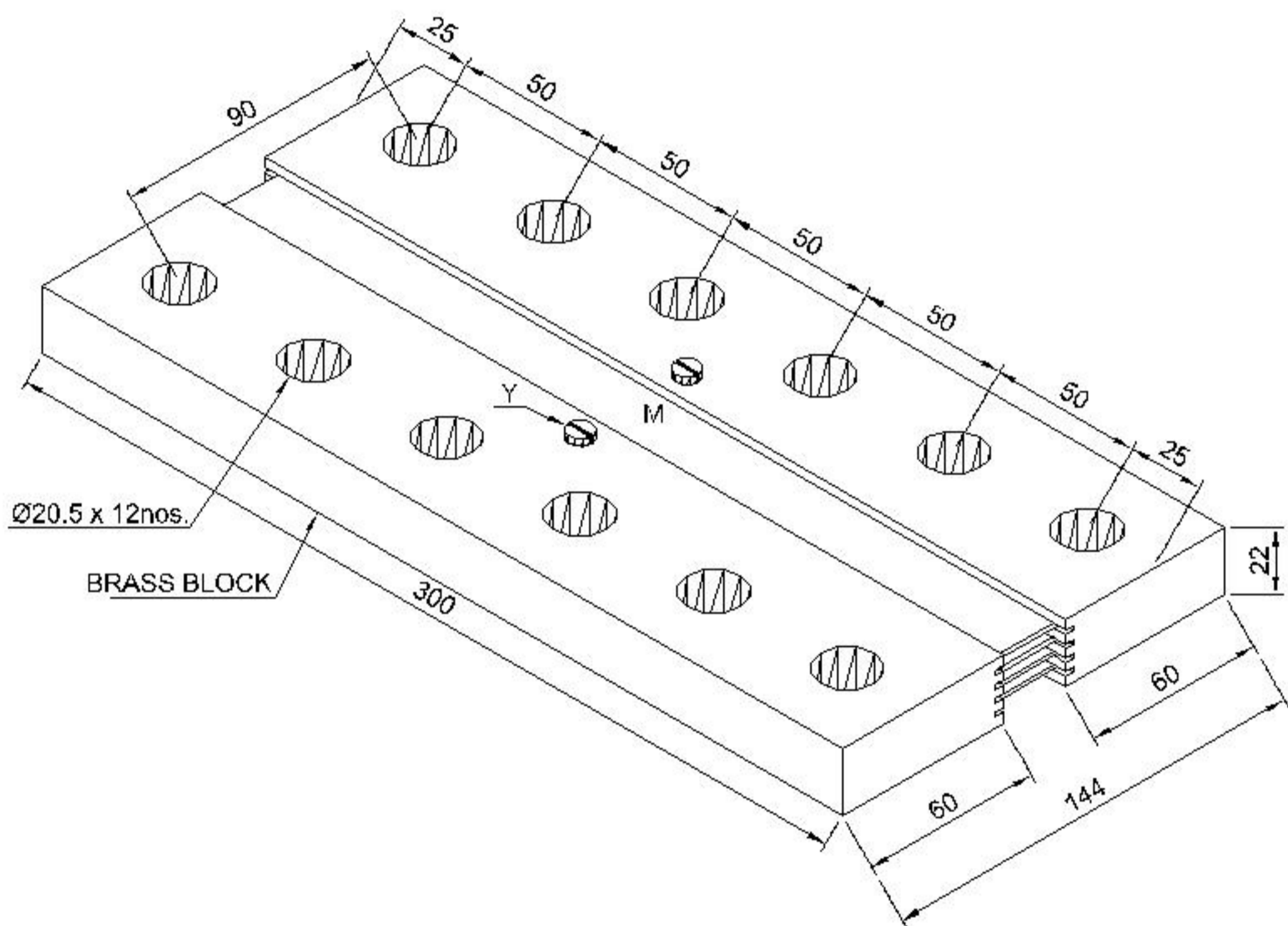
- M - MANGANIN RIBBON
- N - SILVER SOLDERED JOINT
- Y - POTENTIAL CONNECTION - M4 CH. HD. BRASS SCREW w/WASHER

NOTE : ALL DIMENSION ARE IN MM.

DIMENSIONS: SUBJECT TO CHANGE WITHOUT NOTICE

SUMO 75mV SHUNTS

15KAmp
5.00 micro-ohm



- M - MANGANIN RIBBON
- N - SILVER SOLDERED JOINT
- Y - POTENTIAL CONNECTION - M4 CH. HD. BRASS SCREW w/WASHER

NOTE : ALL DIMENSION ARE IN MM.

DIMENSIONS: SUBJECT TO CHANGE WITHOUT NOTICE